



Interloc 139 Airport Solution

The only end-to-end IBM Maximo® and mobility solution that makes CFR Part 139 inspections simple!

Benefits

- Vertically integrated Maximo to Mobile solution designed specifically for CFR Part 139 Inspections
- Provides out-of-the-box Maximo inspection reports for auditing
- Native mobile app that provides transparent online/offline function powered by the Mobile Informer platform
- Collect and report discrepancies in the field
- Seamless, native mobile app that provides transparent online/offline function powered by the Mobile Informer platform
- Collect and report discrepancies in the field
- Collect inspection data in the field
- Complete inspection work orders for unscheduled inspections
- Provides added security through iOS Touch ID authentication
- Provides the ability to implement multi-factor authentication on all platforms

Hundreds of thousands of air travelers go through your airports daily. Passenger safety is the paramount concern for airport operators. You need a way to ensure that inspections are completed and documented reliably to keep your operation running smoothly and your passengers safe.

That's why Interloc developed the Mobile Informer 139 Airport Solution (Informer139) - a vertically integrated solution from Maximo all the way through to the Mobile app, simplifying CFR Part 139 Inspections to assure and document your compliance with all regulatory obligations.

In the United States, that requires full compliance with CFR Part 139 for airport safety of flight inspections and operations. Airport operators in nations participating in the Global Air Travel network must also comply with the Open Skies Treaty and other geographical concerns. i139 is fully capable of meeting these global needs.

But compliance with CFR Part 139 has always been a daily challenge for airport and terminal operators. Failing a compliance audit can mean financial penalties or airport shutdowns that impact your bottom line and the safety of your passengers.

The screenshot displays the Informer 139 mobile application interface. The top navigation bar includes 'Finding', 'Inspection', and 'NOTAM'. The main content area is divided into several sections:

- Bulletin Board:** A table with columns for Subject, Message, Post Date, and Expiration. A message below states: "There are currently no bulletin board messages to view."
- Inbox / Assignments:** A section with a note: "This portlet has not been set up. To set up, select the edit icon in the portlet header."
- Inspector Certifications Expiring within Two Weeks:** A table with columns for Labor, Name, and Certificate #. It shows "No Data Found."
- Open Part 139 Inspection Work Orders:** A table with columns for Work Order, Day/Night?, Job Plan, Status, and Assignments. It lists several work orders, including 1203 (Runway Daily Inspection (Night)), 1211 (FUELING INSPECTION, QUARTERLY), 1214 (PART 139 - RUNWAY LIGHTING INSPECTION - RUNWAY 25), and 1215 (PART 139 - RUNWAY LIGHTING INSPECTION - RUNWAY 34L).
- Open Findings:** A table with columns for Ticket, Description, Reported By, and Findings. It lists findings such as 1171 (testing), 1176 (LIGHTING), 1179 (OBJECTS), 1182 (OBJECTS), and 1183 (CONSTRUCTION).

Interloc 139 Airport Solution

The Interloc 139 Airport solution is an end-to-end, turnkey application suite, which has Maximo applications for robust and complete data management and an Interloc Mobile Informer application for easy mobile data capture in the field.

This provides a complete solution, from managing the inspection schedule, ensuring that only qualified personnel can perform the inspections, marking tasks as day or night, and completing inspections and findings. Interloc 139 Airport solution comes with out-of-the-box data templates, schedules, audit reports and start centers to help make sure that compliance and audit readiness is maintained.

Informer139: Because Inspections Happen in the Field

Informer139, the mobile component of the Interloc 139 Airport solution is a comprehensive mobile application that is seamlessly coupled to Maximo, for optimal data accuracy and timeliness. Informer139 easily lets inspectors find inspections assigned to the individual, crew, asset type or area. Your inspectors will be able to:

- View details of the inspections to be performed

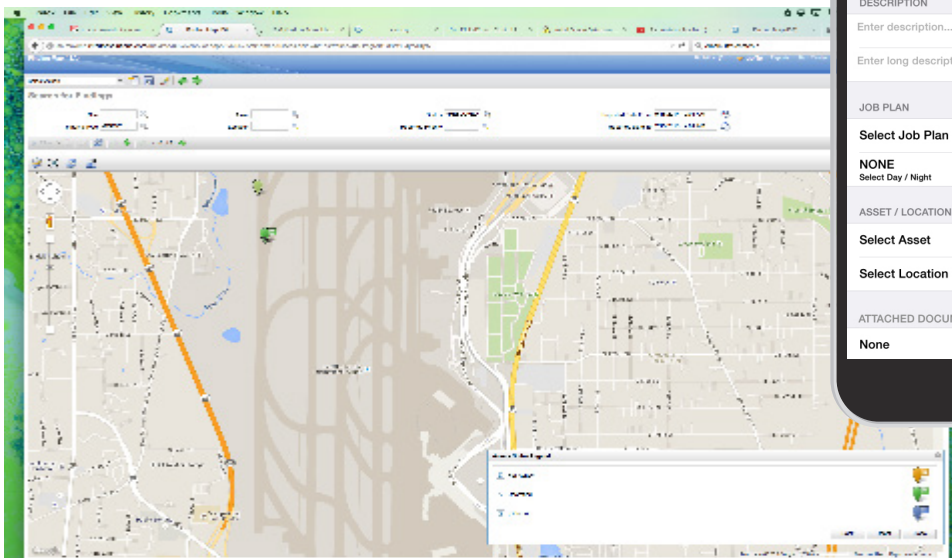
- Quickly mark each inspection point as found in a satisfactory or unsatisfactory condition.
- Guide inspectors through a process to create a finding if the inspection point is unsatisfactory

Within a finding, the inspector can provide a description, identify the location and assets, indicate the severity, and add an annotated photo of the problem area. With Informer139, your inspector can also embed the GPS coordinates where the photo was taken into the photo itself, all without requiring any additional user interactions -- further enhancing data collected.

A Picture is Worth a Thousand Words

Informer139 also provides map views, so your inspectors can:

- View all findings and scheduled inspections on a map inside of Maximo
- Filter the findings on the map based on type, date, severity, asset, location and status
- Determine where problems are occurring alongside scheduled inspections



For example, a user may want to see all high priority wildlife related findings during Spring and adjust their inspection schedule accordingly.

Resolving Findings

Findings can be resolved immediately from the device. All remediation data is sent directly to Maximo to ensure a complete log of all activities performed. All supporting data is accurately captured, enabling quick reporting in the case of an audit.

Need an inspection report? No problem. Easily create a report within Maximo showing all completed inspections, completed inspections, associated findings, follow up work, incomplete tasks and unsatisfactory results.

Creating NOTAMs

If the inspection results in discovering a significant hazard, Informer139 lets your inspector easily create and initiate a draft Notice to Airmen (NOTAM) directly from the mobile device.

This NOTAM includes:

- A description of the issue
- The asset and location affected

- The assessed condition of the issue.

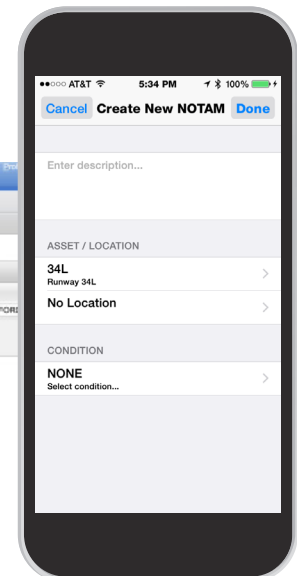
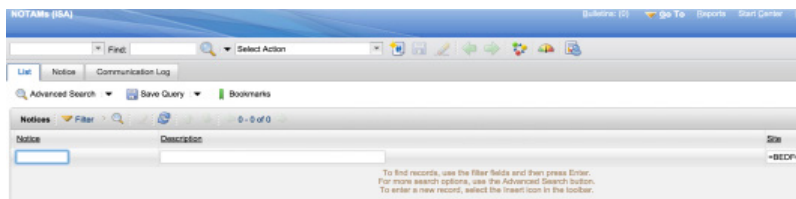
Once submitted, standard Maximo features route the record to the proper authority for evaluation and submission to the FAA, if appropriate.

Creating Ad-Hoc Inspections

Informer139 lets your inspectors create an ad-hoc inspection for anything encountered in the field, letting them quickly respond to the dynamic environment of airport operations without missing a beat in following proper procedures and collecting all required data.

Security

Since security is a top priority for airports, Interloc has integrated Touch ID fingerprint authentication on iOS platforms. Multi-factor authentication (like PIV-CAC) is built into the Mobile Informer platform and provides enhanced levels of security. This provides the assurance that you need that only authorized and qualified inspectors are ever allowed to perform these critical inspections.



Complete Feature List

Manage Inspection Schedules in Maximo

- Create scheduled inspections for typical inspections
- Setup scheduled inspection for day/night/both inspection tasks
- Create an inspection schedule for a specific asset/location
- Attach documents such as PDF or images
- Create inspection schedule based on a date or schedule
- Create seasonal inspection schedules
- Create inspection groups that relate to asset groups, crews or areas of runway
- Assign and filter scheduled Inspections to groups

Reporting in Maximo

- Maximo BIRT report showing all inspections, follow up work orders, findings, incomplete and unsatisfactory inspection results
- Maximo BIRT report showing all inspector training history including a description and date

Finding and Scheduled Inspection Map for Maximo

- Display map showing findings and scheduled inspections
- Filter findings based on type, date, asset, location, priority, status and report date.
- Modify layers to visually display planned inspections and findings based on status, type or priority

Complete Inspections on Mobile Device

- Attach new photos and annotate with touch
- Create special inspections in response to unusual activity such as construction, weather or accidents
- Mark each inspection task as SATISFACTORY/ UNSATISFACTORY; Create optional findings
- Use XML Configuration to add custom fields
- Annotate attached docs such as maps and schematics
- Add work logs to inspection work orders

- When searching for locations use the device GPS to filter location/asset list to records close to the user

Create Findings on Mobile Device

- Note any unusual conditions as findings
- Specify a type such as construction, snow, wildlife, etc
- Resolve findings with actions completed
- Create a NOTAM for unresolved findings
- Automatically records the GPS coordinates
- Attach new photos and annotate with touch
- Manually select a location with a clickable map when creating a finding or special Inspection

Verify Inspectors on Mobile Device

- Restrict inspection work orders to only be completed by qualified inspectors
- Recognize if an inspector is qualified. A qualified inspector must receive initial and recurrent instruction every 12 months
- Automatically email inspectors when qualification is about to expire
- View inspection work orders on a map

Create NOTAMs on Mobile Device

- Create a NOTAM in draft status on Mobile
- Specify condition, corrective action, date/time when action will be completed, airport supervisor, air carriers and local FBO
- Show all open NOTAMs on device
- Display NOTAM in Maximo Start Center where it can be approved or cancelled. Approved NOTAMs will send an email to an email list administered in Maximo